


An architectural rendering of a modern middle school building. The building features a long, low profile with a series of vertical wooden slats or panels on its exterior. Large windows are visible on the upper level. The foreground shows a paved area, a small landscaped area with plants, and a fire hydrant. The background shows a fence and another building.

Menifee Valley Middle School Reconstruction

Resources Online



Inquiry • Heart • Discovery



MENIFEE
Union School District
Inquiry • Heart • Discovery

DISTRICT INFO • DEPARTMENTS • CALENDARS • STAFF • PARENTS • COMMUNITY • SCHOOLS

FACILITIES DEPARTMENT

Department Home

Annual and Five-Year Report

CFD Information

Citizens' Bond Oversight Committee for Measure Q

Developer Fees

Forms

Project Updates

School Fee Study - Residential Development

School Fee Study - Commercial / Industrial Development


Water Testing

Project Updates

MVMS Design Symposium
By: District Admin

(This is a Measure Q project)

Menifee Valley Middle School Design Concept Book



Powered by ISSUU [Publish for Free](#)

Symposium and Master Planning Book

SEE MORE ⁴ SHARE

Thought Exchange

Results:

Menifee Union School District

IMPORTANT SKILLS FOR STUDENT SUCCESS

Perseverance and Work
Ethic
Respect for Others
Character and Leadership

KEY PROGRAMS/OPPORTUNITIES FOR STUDENT SUCCESS

VAPA
STEM/STEAM
CTE

PRIMARY CONSIDERATIONS WHEN CHOOSING A SCHOOL

Teachers and Staff Quality
Safety and Security
School Ranking and
Reputation

Results:

Menifee Valley Middle School

IMPORTANT SKILLS FOR STUDENT SUCCESS

Perseverance & work ethic
Respect for others
Self confidence and
motivation
Career technical education
Collaboration & teamwork

KEY PROGRAMS/OPPORTUNITIES FOR STUDENT SUCCESS

Electives & Experiential learning
Extracurricular activities
Athletics
Visual and performing arts
Career technical education
Collaboration and teamwork

PRIMARY CONSIDERATIONS WHEN CHOOSING A SCHOOL

Teachers & staff quality
Safety and security
School environment
School rankings & reputation
Student behavior & discipline



Campus Focus:
Visual & Performing Arts

Design Symposium



Sessions

1

May 15th, 2018

Executive Oversight Team

- Project Kick-Off
- Symposium Process Overview
- Defining Project Goals

2

May 16th, 2018

School Site Presentation

Site Users Kick-off Session

- Welcoming remarks
- Symposium Process Overview

Defining Project Goals

- Educational Specifications
- Educational Outcomes
- Community Connections & Expectations

Reviewing Project Facts

- Programs & Facility Implications
- Projected Enrollment
- Community Considerations
- Site Conditions

Closing

- Q&A
- Next Steps

3

June 6th, 2018

Symposium

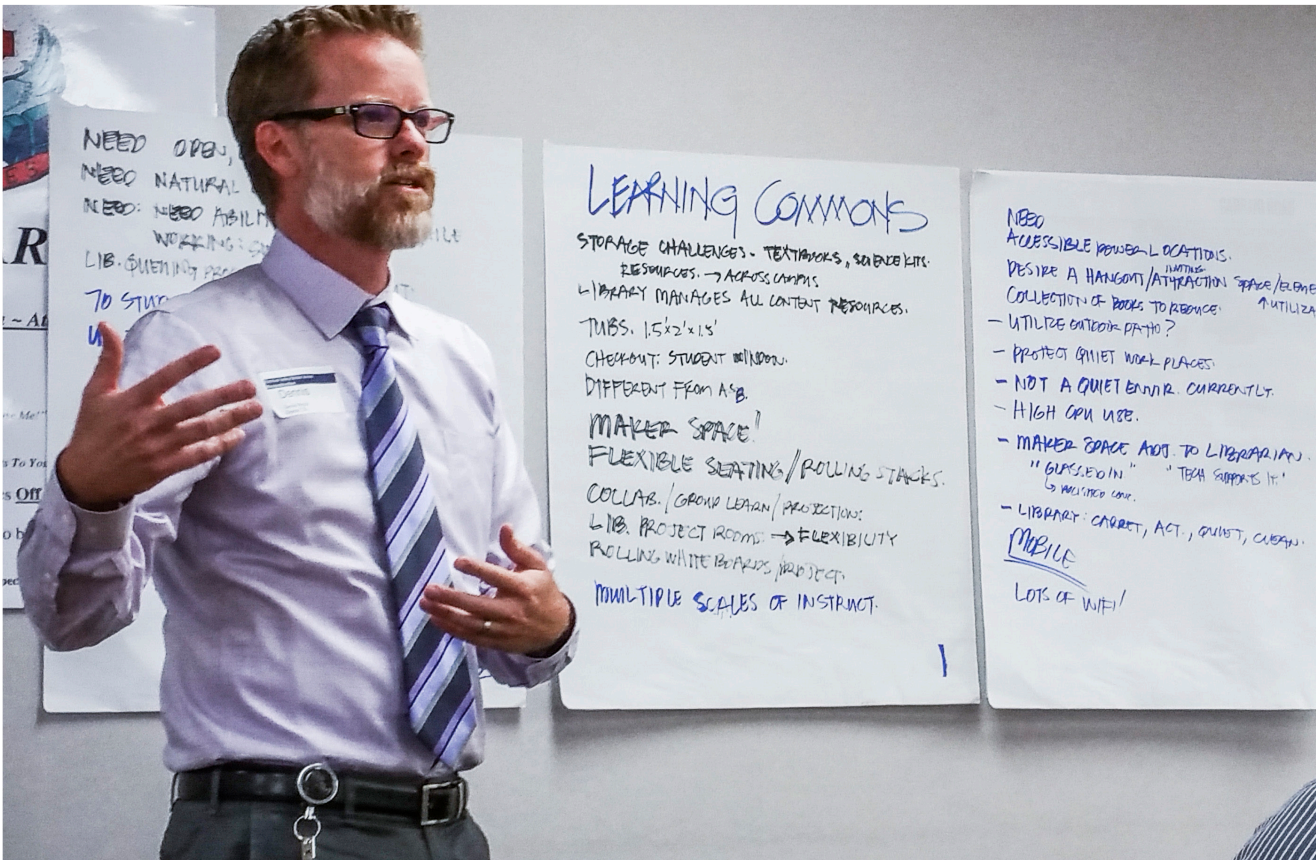
- Introductions & Setup
- Administration & Student Support
- Visual & Performing Arts
- Learning Commons
- Group Reporting
- Core Curriculum
- Science
- Group Reporting
- Physical Education & Athletics
- Site & Building Development
- Executive Team Briefing

4

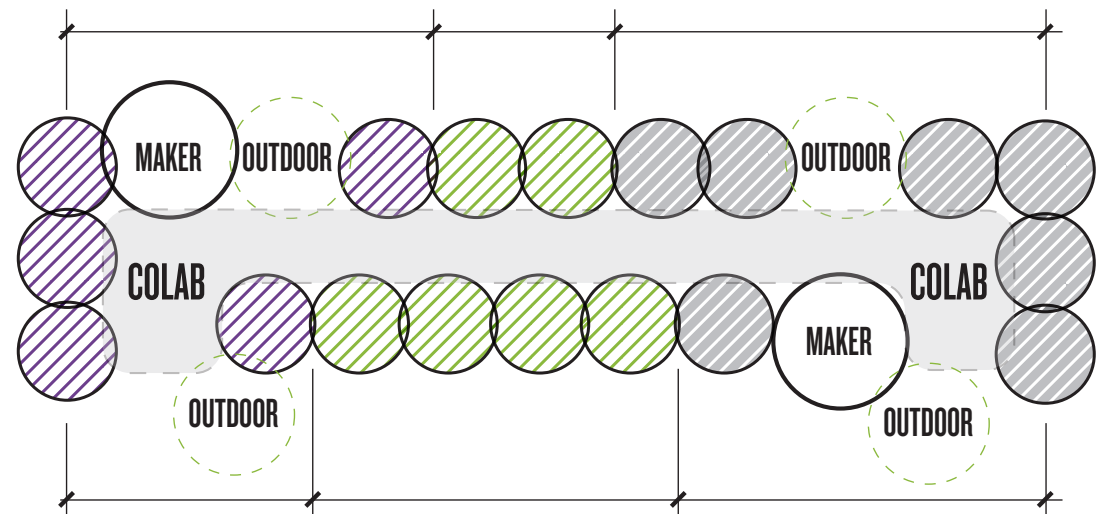
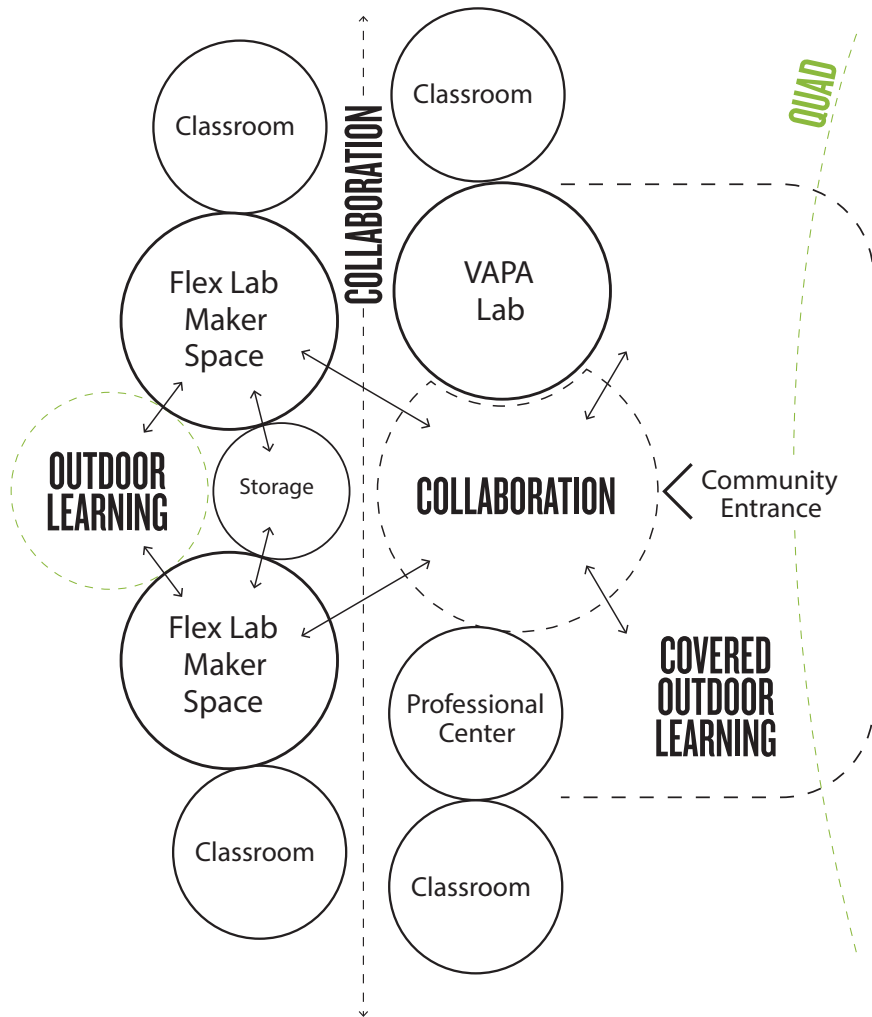
June 27th, 2018

Site Concepts

Site Concepts Presentation

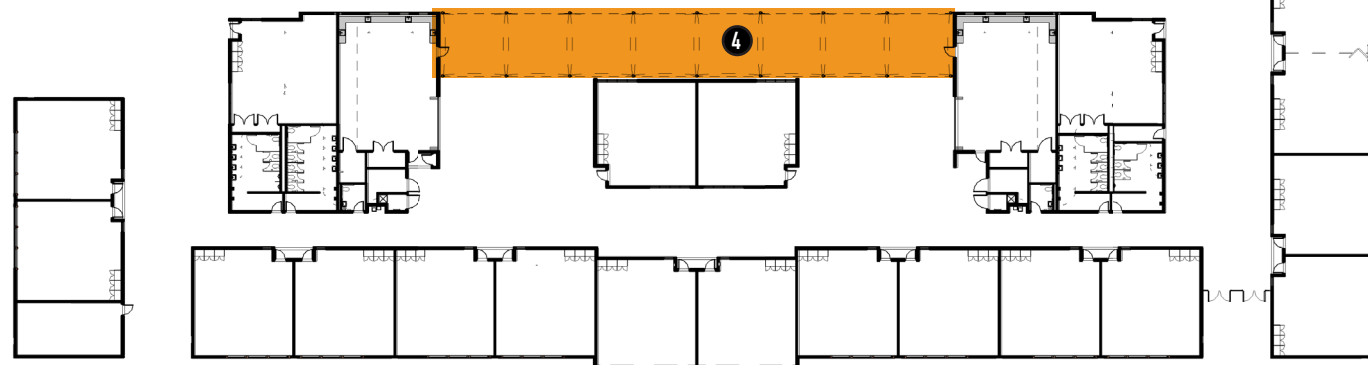
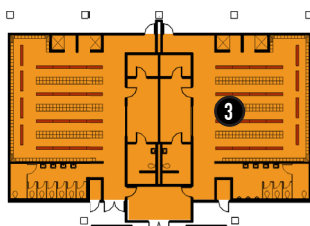
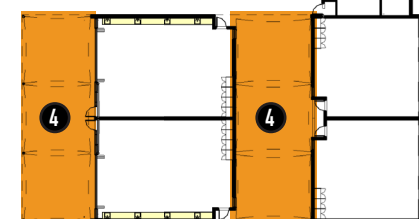
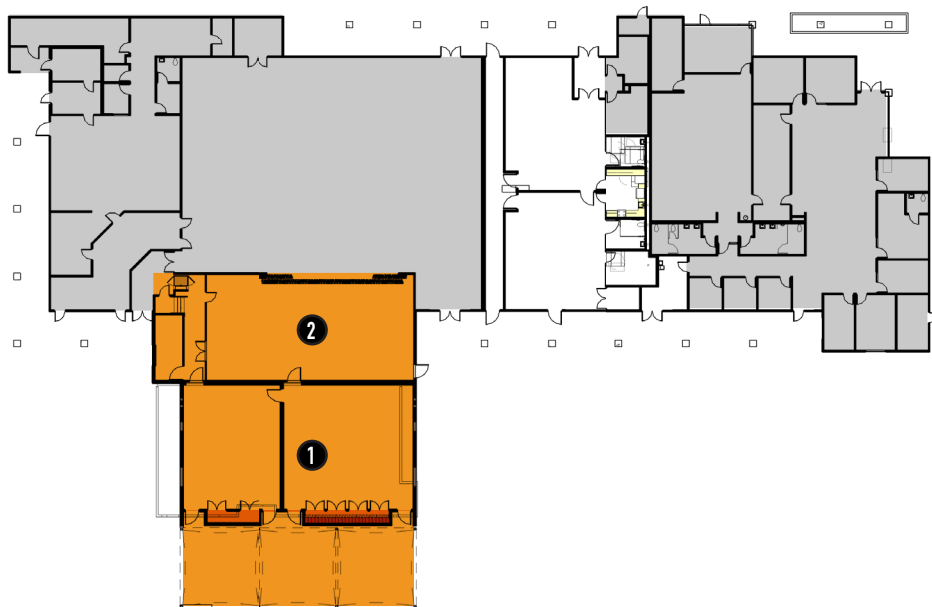


Crafting Learning Environments



Site Master Plan





- ① Choir & Band
- ② Stage
- ③ Locker Room
- ④ Shade Structures

Phase 1:
Design, EMWD Review and Approval Complete: August 2019
Construction: September 2019 through November 2019

Phase 1

1. New Sewer Line Connection to replace current Leach field Septic System



Phase 2:

Design, DSA Review and Approval Complete: June 2019

Construction: July 2019 through November 2019

District Classroom Move: Winter Break 2019/2020

Phase 2

1. Regrading and Expansion of Hardcourts/Asphalt
2. Interim Housing (Temporary Portables)
(40) Classrooms Units
(3) Bathroom Units
(1) Library Unit
3. Special Education Renovation within Existing Library Space (Riverside County Office of Education)
4. Construction Fencing, Phase 3 Construction

Phase 3:

Design, DSA Review and Approval Complete: December 2019

Construction of New Campus Structures, Site Improvements: January 2020 through May 2021

District Occupies New Improvements: July 2021

Phase 3

1. Music & Choir Building

2. Renovated Stage

3. Renovated Locker Rooms:

Renovation of existing lockers, ADA upgrades, finish improvements, AV improvements, Washer/Dryer Addition

4. New Classrooms

Permanent, New, State of the Art Classrooms with abundant natural light, wireless technology, and energy efficient lighting systems.

5. New Library

Large, open, flexible plan configuration, abundant natural light, collaboration areas, soft seating.

6. Flex Labs

Active learning spaces, with adjacent outdoor learning spaces, large operable doors, polished concrete floors, abundant natural light, multiple sinks, durable surfaces, storage, and acoustical treatments. Optimized for use in the Arts, Music, or Sciences.

7. New Academic Courtyard

Permanent, New, State of the Art Classrooms with abundant natural light, wireless technology, and energy efficient lighting systems.

8. Shade Sails

Illustrations



Parent Drop Off



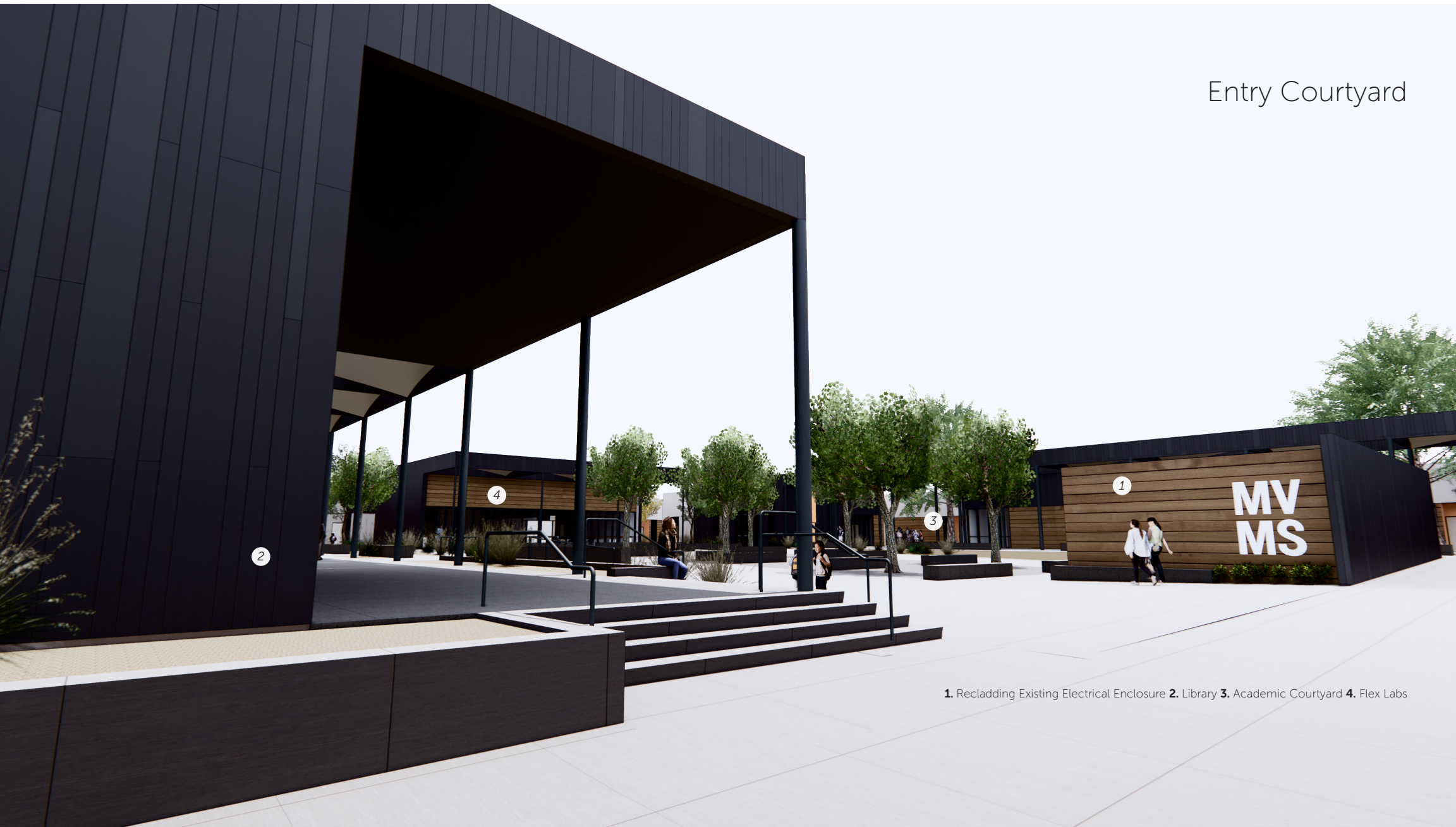
1. Parent Drop Off 2. Existing Admin Building 3. Main Campus Entry 4. New Library 5. Repaint the Existing Campus

Campus Entry



1. Existing Admin Building 2. Main Campus Entry 3. New Library 4. New Classrooms

Entry Courtyard



1. Recladding Existing Electrical Enclosure 2. Library 3. Academic Courtyard 4. Flex Labs

Academic Clusters & Outdoor Collaboration



Academic Quad



1. Academic Quad, Socialization Space 2. Large Panel Door at Flex Lab 3. Academic Cluster 4. Shade Sails



Library

1. Library Entry 2. Large Panel Door 3. Student Collaboration Area
4. Book Stacks 5. Reception Desk



Band & Choir Building Addition

1. Existing Lunch Shelter 2. New Shade Structure 3. New Choir and Music Addition 4. MPR Access 5. Stage Renovation